

□

THE CORNER**CULTURE**

‘Critical Race Training’ Forces a Woman to Quit Her Job with Smith College

By **GEORGE LEEF** | February 20, 2021 7:51 AM

Recently, Professor William Jacobson [wrote for the Martin Center](#) about a new project of his Legal Insurrection Foundation, a site to explain and track the spread of a noxious bit of leftist mind control called Critical Race Theory.

In [this post](#) on his site, he goes into the case of Jodi Shaw, who found the atmosphere at Smith College, her alma mater and where she worked as a student support coordinator, to be so hostile that she had to resign. She did not care to be compelled to “participate in racially prejudicial behavior as a condition of my employment.”



The “woke” staff at Smith harassed Jodi into quitting. That wouldn’t be tolerated if she weren’t white.

I hope that someone who evaluates people on the content of their character rather than the color of their skin offers her a good new job.

 **RETURN TO THE CORNER**



GEORGE LEEF is the the director of editorial content at the James G. Martin Center for Academic Renewal.

AROUND THE WEB





20 Stars Who Just Became Republicans

POLLHYPE



"CBD Arms Race" Being Waged By The Biggest Corporations In the World

SPRUCE



Finance PhD: "Move Your Money Before April 2021"

STANSBERRY RESEARCH



The Most Sought After Lawyers in Florence. See the List

FIND ATTORNEYS | SPONSORED

RECOMMENDED



Biden Signs Executive Order Allowing the U.S. to Fund Global Abortions

ALEXANDRA DESANCTIS



Tulsi Gabbard: Domestic-Terrorism Bill Is 'a Targeting of Almost Half of the Country'

BRITTANY BERNSTEIN



Democrats Are Laying a Trap with Trump's Impeachment Trial

ANDREW C. MCCARTHY



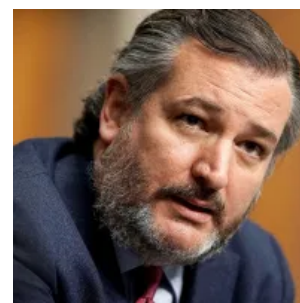
Joe Biden's First Mistake

KEVIN D. WILLIAMSON



Exclusive: 48 Senators Promise to Oppose Any Bill that Funds Abortion

ALEXANDRA DESANCTIS



Cruz: Actually, It Is Constitutional to Impeach and Convict a Former President

JOHN MCCORMACK

YOU MAY ALSO LIKE

Powered by ZergNet



Greta Thunberg Comes



The Truth About Sasha



Jill Biden's Ex-Husband

After AOC In Bizarre Attack



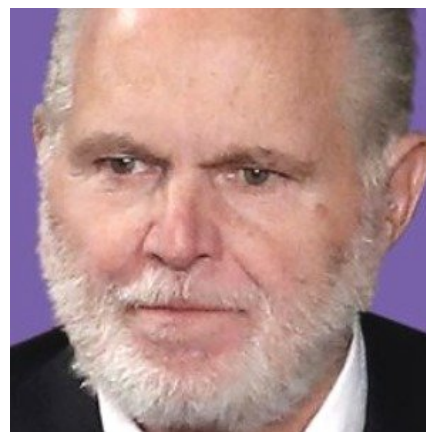
Kamala Harris Has A Shady Side Basically Nobody Likes To Mention

Obama Is Out in the Open



The Drastic Transformation of Jill Biden Is Causing a Stir

Just Made a Bold Accusation



Rush Limbaugh Took Jab At Biden In Final Facebook Post

THE LATEST



Will Politicians Take Away the Ballot Initiative?

JOHN FUND



Biden's Policy of Weakness Toward Iran

THE EDITORS



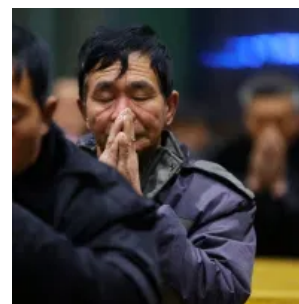
Fauci: Returning Students to In-



Pence Turned Down CPAC Invite:



WHO Panel to Recommend



In the Second Cold War, Religious

**Person Learning Is
'Not an Easy Issue'**

BRITTANY BERNSTEIN

Report

BRITTANY BERNSTEIN

**'Deeper' Study
into First COVID
Patient**

BRITTANY BERNSTEIN

**Americans Must
Lead the Way**

CAMERON HILDITCH